

METERLINK

CENTRALIZED ACCESS SYSTEM

Infrastructure and portal
for remote reading of
smartmeters



smartmeterq

fIZUREBOX

METERLINK

The **MeterLink** portal, developed by **SmartMeterQ**, is an application suite (SAC) that uses state-of-the-art technology infrastructure and offers high-profile professional online technical support.

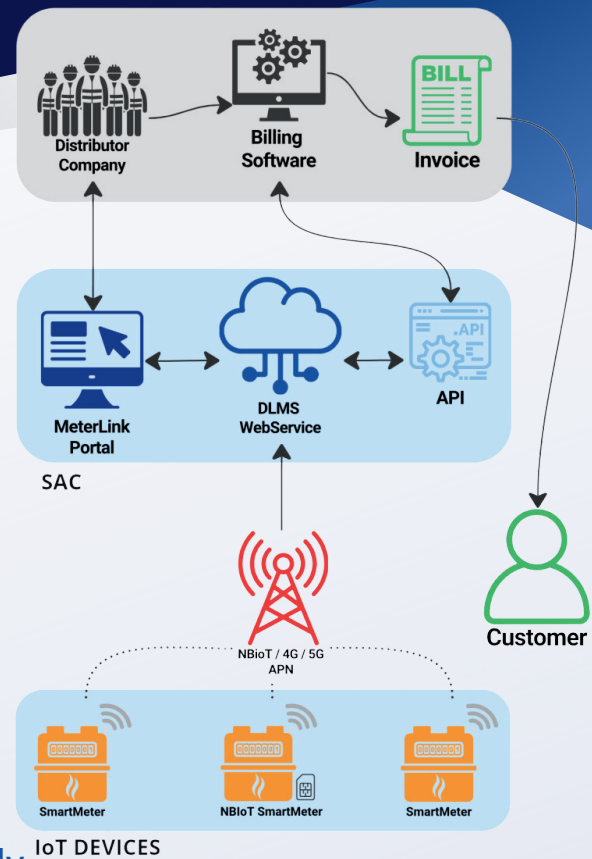
MeterLink allows management of devices produced by both **SmartMeterQ** and **other manufacturers**.

The web portal is accessible from anywhere and easily integrated with any automated system for invoice generation and customer management (CRM)

What our portal offers

MeterLink already includes everything needed for integration and provides several ways to transfer data to enterprise CRMs, such as:

- Using FTP and Excel files
- Web Services
- Custom protocols



FEATURES

Web application and WebAPI

To facilitate integration with management

accounting automation and CAPEX savings

Improved accounting productivity

Deploy as a service or on-premise

installation in accordance with company policies

Compatibility of device protocols

DLMS, MQTT and SMS device management

Easy integration with pre-existing systems

With APIs, connecting with CRM and ERP is easy

MeterLink is **totally transparent** in its operation, and its integration into existing systems is a smooth, linear process in which SmartMeterQ is always by your side.

MeterLink takes care of meter checking and data validation.



What are the functionalities of the portal

- Customer data management
- Management of devices
- Secure management of cryptographic key access to devices
- Management of valve opening and closing
- Reading alarms from meters
- Use of WebApi for interaction with CRM ERP systems
- Custom profile management for each device (DLMS and MQTT)
- Management of missed connection alarms

